

# ARTIST PROFILE



From the Window #32 by Donald Archer. Mixed Media. 15" x 21 1/2"

## Donald Archer Captures the Silence of Nature

By JEANETTE CASILLAS / CASA

**A TRAIN RIDE EAST** left a lasting impression on Oak Group artist Donald Archer. The cross country experience is reflected in a body of work that opens with an artist reception on Friday, May 2nd from 5-8pm at the Marcia Burt Studio.

"I let the experience of life dictate what I express in my paintings," Archer recently described.

For 30 years Archer has been known for painting California landscapes. But, a trip from San Luis Obispo to Manhattan, New York in 2005 to visit a friend led him on an inspirational journey that has manifested itself in his paintings ever since.

His seat on the train faced backwards which allowed him to see "where he had been, instead of what was ahead," Archer explained. While on the train he worked in a small notebook which he later translated into larger paintings.



Donald Archer

"The train is fast and moving all the time" he recalled. "The landscape was changing so fast, I had to shorthand what I saw."

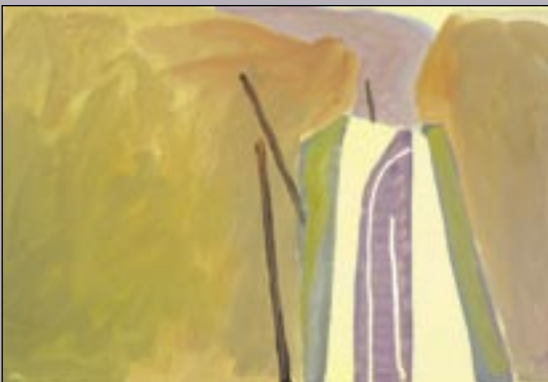
All landscapes put Archer in a spiritual state of mind. "It's like listening to beautiful music," he

shared. Archer incorporates his love for music by painting in a musical way, with both harmony and rhythm.

Archer's paintings from this trip have allowed him to digest the experience. When he paints he takes one idea and produces several variations, allowing him to explore color, line, and design.

Archer is looking forward to seeing his work outside of his studio, in a foreign environment. "Each painting is one aspect of the entire experience," Archer shared. "All together they give a comprehensive picture of what I experienced and I wanted to express."

He believes that life is never complete, and is always looking for "a better statement, a more articulate way of expressing, or feeling life and the world... I don't wait to get inspired, I'm always working," Archer shared.



From the Window #5 by Donald Archer. Mixed Media. 15" x 21 1/2"

Paintings by Donald Archer will be on display at the Marcia Burt Studio through June 8th. Marcia Burt Studio is located at 517 Laguna St, open Sat & Sun 11-5pm and by appt. For more information call 962-5588.