

## Paintings by Lee Lawson at the Karpeles Museum

# Dreaming Woman

By Kerry Methner / CASA

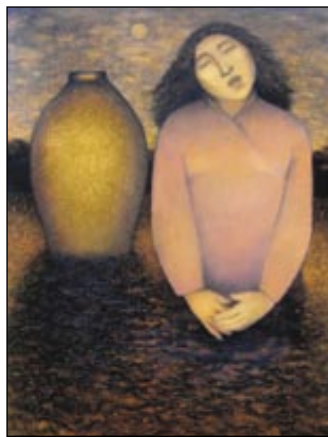
**STRETCHING HER BRUSH DOWN** to Santa Barbara from the rim of a canyon overlooking the ocean in San Luis Obispo County, artist Lee Lawson's perceptive eye plows the slumbering soul with color, planting lucid portraits of her internal family in a show titled *Dreaming Woman* on display at the Karpeles Manuscript Library Museum through August 27th.

"I knew from the time I came into the world, I was an artist," she shared. "I was born with a paintbrush in my hand."

The Karpeles will hold an artist reception on Sunday, June 13th from 2 to 4pm. In a related talk at 2pm, psychologist and author, Kathryn Lane Rossi, Ph.D., will discuss *Art, Beauty, and Truth; How Art Transforms Us*.



*Dreaming Woman*, by Lee Lawson



*Song of the Sea*, by Lee Lawson

Lawson, who studied painting in art school, at the Atlanta College of Art, as well as lived in Europe for a few years, traveling, studying, and painting, feels that "every artist is essentially self-taught regardless of formal training."

She explained, "You learn to paint by painting, to dance by dancing, to write by writing. You can learn some basics of technique in school but it takes a life time of work to develop the coming together of what you want to express with how you want to express it."

The work in *Dreaming Woman* spans 20 years of Lawson's paint meditations. She now wields her brush four days a week - a kind of balance with the rest of her life on the canyon rim that is filled with two dogs who love to walk the beach, a husband named Martin, and many books and friends. "I have a passion for the beauty of this area," she related.

Lawson often first meets her painted images in her dreams or during her lifelong meditation practice. "I've always loved my dreams," Lawson shared. "My paintings are internally inspired."

Grasped by the transformative power of art, she continued, "When people see powerful art that moves them, they are not only affected emotionally, or



Lee Lawson



*Sage*, by Lee Lawson

aesthetically. Research tells us that the brain itself is changed by experiences of beauty. And very recent research says that, empirically, on the level of gene expression, art changes who we are... in a very concrete way." It is from this perspective that Rossi will offer her thoughts.

"I'm an individual person who generates a field and lives within a field," Lawson explained of her role as an artist. "I put images in paintings in that field that are healing and

transformative." *Dreaming Woman* offers "the viewer an opening, generally of dream images, into the inner life." It speaks to Lawson's fascination with consciousness, both personal and archetypal. "It is about an essential coming into consciousness and being embodied," she described.

Lawson has been exhibited in New York, Washington, Atlanta, the SF Bay Area, LA, Seattle, Scottsdale, Maine, as well as in several cities in Japan.

Karpeles Manuscript Library Museum is open noon to 4pm Wed-Sun and is located at 21 W Anapamu St. The exhibit is in the 2nd level gallery through Aug 27th. For information call 962-5322.



*My Mother's Garden*, by Lee Lawson